

**2020**  
—  
**20 YEARS**

# EXTERIOR PRODUCTS TO LAST A LIFETIME.

product catalog

**METALWORKS**  
— Canada Ltd. —

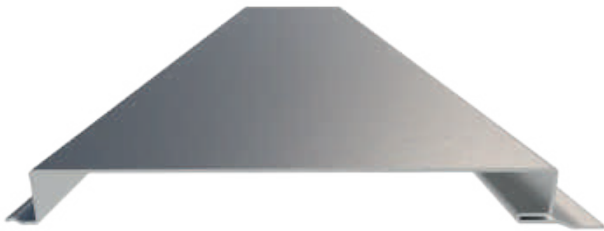
# OUR PRODUCTS

metalworks canada

## HERITAGE PANELS

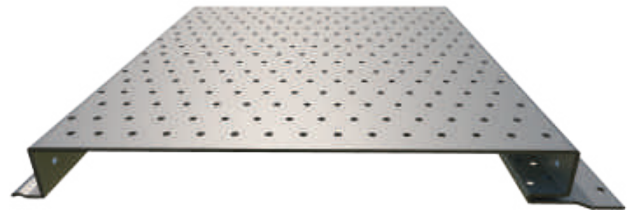
Metalworks Canada offers 10 profiles for wall and soffit applications. These panels are all designed with no exposed fasteners and connect with either clips or a nailing strip. Perfect for residential, commercial, agricultural, and architectural projects. Available in 24 gauge steel or 22 gauge weathering steel.

Looking for something different? Metalworks Canada can create custom profiles to fit any design.



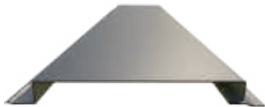
### Traditional

- 8" width - Unlimited length
- Wall or soffit application
- Sleek, modern design



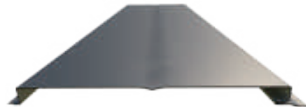
### Traditional Perforated

- 8" width - Unlimited length
- Soffit application
- Contemporary look



### Ranch Panel

- 8" width - Unlimited length
- Wall application
- Horizontal or vertical installation



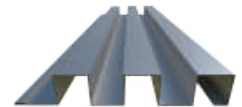
### Flush Wall Panel

- 12" width - Unlimited length
- Wall application
- Extra width provides greater coverage



### Forma Plank

- 6<sup>1</sup>/<sub>4</sub>" or 8<sup>1</sup>/<sub>2</sub>" width - Max 26' 4" length
- Wall application
- Horizontal or vertical installation



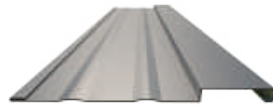
### Box and Batten

- 12" width - Max 26' 4" length
- Wall application
- Deep ribs create shadow effects



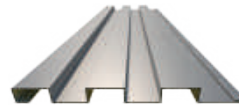
### Board and Batten

- 8" to 12" width - Max 26' 4" length
- Wall application
- Clean, smooth design



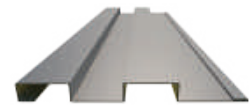
### Striated Board and Batten

- 8" to 12" width - Max 26' 4" length
- Wall application
- Striations create visual interest



### MC 1<sup>1</sup>/<sub>2</sub>" Wall Panel

- 9<sup>5</sup>/<sub>8</sub>" width - Max 26' 4" length
- Wall application
- Subtle ribs create a modern feel



### MC 2" Wall Panel

- 8" width - Max 26' 4" length
- Wall application
- Ribs produce long, clean lines

## STANDARD COLOURS

24 ga. metal



**BRIGHT WHITE**



**WHITE WHITE**



**BONE WHITE**



**STONE GREY**



**WICKER**



**TAN**



**HICKORY**



**REGENT GREY**



**MELCHERS GREEN**



**BRIGHT RED**



**TILE RED**



**DARK RED**



**BUCKSKIN**



**COFFEE BROWN**



**DARK BROWN**



**BLACK**



**SAPPHIRE BLUE**



**ROYAL BLUE**



**HERON BLUE**



**SLATE BLUE**



**OXFORD**



**CHARCOAL**



**CARBON**

## SPECIALITY COLOURS



**ACORN**



**AUTUMN**



**BARNBOARD**



**ESPRESSO**



**FRONTIER**



**GUNSTOCK**



**PRINTED CORTEN**



**SADDLE**



**WAGONWOOD**



**WEATHERED  
ZINC**



**22 GA. WEATHERED  
STEEL**

*Colours shown here are for reference only.*

*Final colour selection should be made from actual colour chips.*



**Metalworks Canada** offers multiple varieties of metal: aluminum, copper, and weathered steel, as well as unique trims to accommodate your project requirements. Or, if you're looking for a unique touch, we can create custom profiles in almost any size, shape, or colour, including curved or domed panels.

Contact us to discuss all of the options available for your project.



### **For More Information**

Bay A, 1115-48th Ave. SE  
Calgary, Alberta T2G 2A7

**1-866-279-2766**

[orderdesk@metalworkscanada.com](mailto:orderdesk@metalworkscanada.com)

[metalworkscanada.com](http://metalworkscanada.com)

